

1 (a) Fig. 1.1 is a diagram of an animal cell.

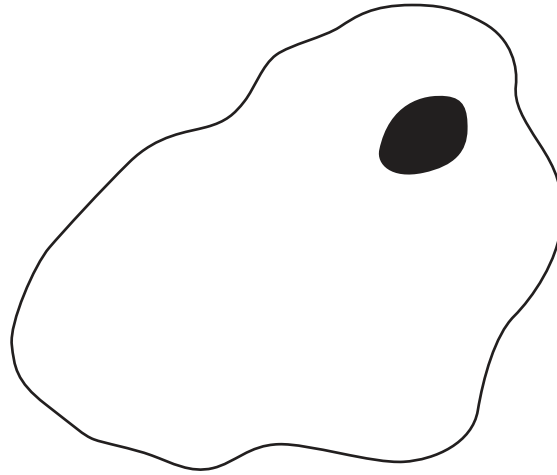


Fig. 1.1

Label **three** structures **on the cell** shown in Fig. 1.1, using label lines and the names of the structures. [3]

(b) State **two** structures that are found in plant cells but **not** in animal cells.

1

2

[2]

[Total: 5]

2 (a) Fig. 2.1 is a photograph of a lobster, which is an arthropod.

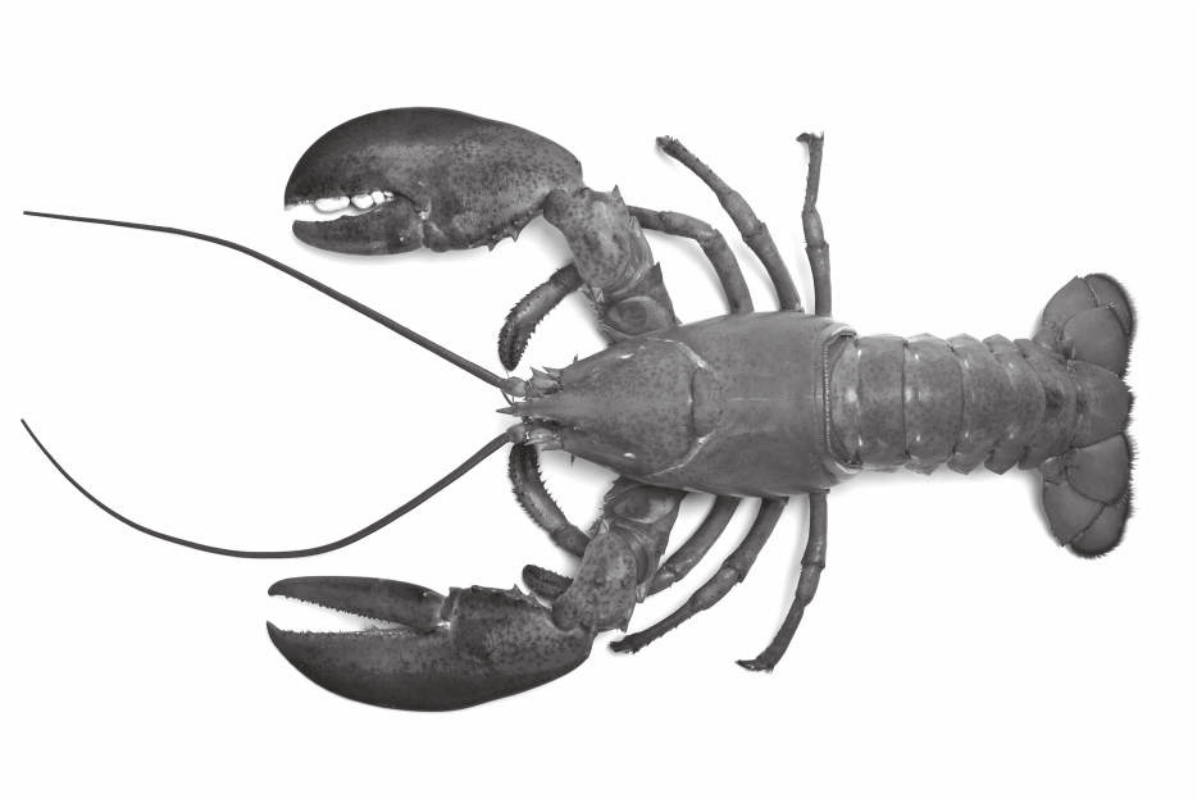


Fig. 2.1

Describe **two** pieces of evidence visible in Fig. 2.1 that identify this organism as an arthropod.

1

2

[2]

(b) The scientific name of the arthropod in Fig. 2.1 is *Homarus americanus*.

State the genus name.

..... [1]

(c) The arthropod shown in Fig. 2.1 is a crustacean.

State the names of **two other** groups of arthropods.

1

2

[2]

(d) Many species of crustaceans live in seas and oceans.

Some of these species have become endangered.

Describe reasons why some marine crustacean species have become endangered.

.....

.....

.....

.....

.....

.....

.....

..... [3]

[Total: 8]

- 3 (a) HIV is a pathogen that can cause AIDS.

Table 3.1 shows the adult population size of a country and the estimated number of people infected with HIV/AIDS in that country in 2016.

Data for six countries are shown.

Table 3.1

country	adult population size	estimated number of adults infected with HIV/AIDS
A	808 824	220 000
B	248 490	8 200
C	221 000	221
D	3 250 000	130 000
E	5 111 111	46 000
F	1 333 333	48 000

- (i) State which country in Table 3.1 had the greatest number of adults infected with HIV/AIDS.

..... [1]

- (ii) Calculate the percentage of adults in country **B** that were infected with HIV/AIDS.

Give your answer to one decimal place.

..... %
[2]

- (iii) State why antibiotics are **not** effective against HIV.

.....
.....
..... [1]

(b) The sentences describe how pathogens can be transmitted.

Complete the sentences using words from the list.

Each word may be used once, more than once or not at all.

AIDS

blood

disease

food

HIV

inherited

Pathogens for a transmissible may be transmitted through direct contact, for example through or other body fluids.

They can also be transmitted indirectly through contaminated surfaces,, animals, or from the air.

[3]

(c) The human body has several defences against pathogens.

These can be mechanical barriers, chemical barriers or responses by cells.

The boxes on the left are examples of body defences.

The boxes on the right are the different types of defence.

Draw **one** line to link each example to the correct type of defence.

Draw **four** lines.

example

antibody production

hairs in the nose

phagocytosis

stomach acid

type of defence

chemical

mechanical

response by cells

[4]

(d) The boxes show some examples of diseases.

(i) Place ticks (✓) in the boxes to show all the diseases that are caused by malnutrition.

cholera	
HIV	
lung cancer	
obesity	
scurvy	

[2]

(ii) State **three** risk factors for coronary heart disease (CHD).

1

2

3

[3]

[Total: 16]

- 4 (a) A scientist investigated how the growth of plant shoots was affected by the direction of light.

A light source was placed on one side of a shoot and the scientist recorded the appearance of the shoot after a few days.

Fig. 4.1 shows his results.

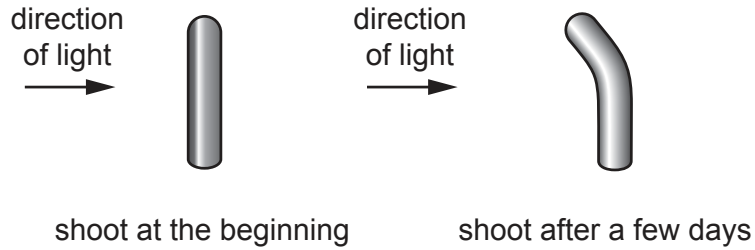


Fig. 4.1

- (i) Describe the results shown in Fig. 4.1.

.....
.....
..... [1]

- (ii) State the name of the response to light shown in Fig. 4.1.

..... [1]

- (iii) Explain the advantage to a plant of the response shown in Fig. 4.1.

.....
.....
.....
.....
..... [2]

(b) Plant roots absorb mineral ions by active transport.

(i) Define the term active transport.

.....
.....
.....
..... [3]

(ii) State the importance of these mineral ions in plants.

magnesium ions
.....
.....
nitrate ions
.....
..... [2]

(c) State **two** uses of water in plants.

1
2 [2]

[Total: 11]

5 Recycling rates in one country were monitored every ten years.

The percentages of different types of recycled materials were recorded.

Fig. 5.1 shows the results.

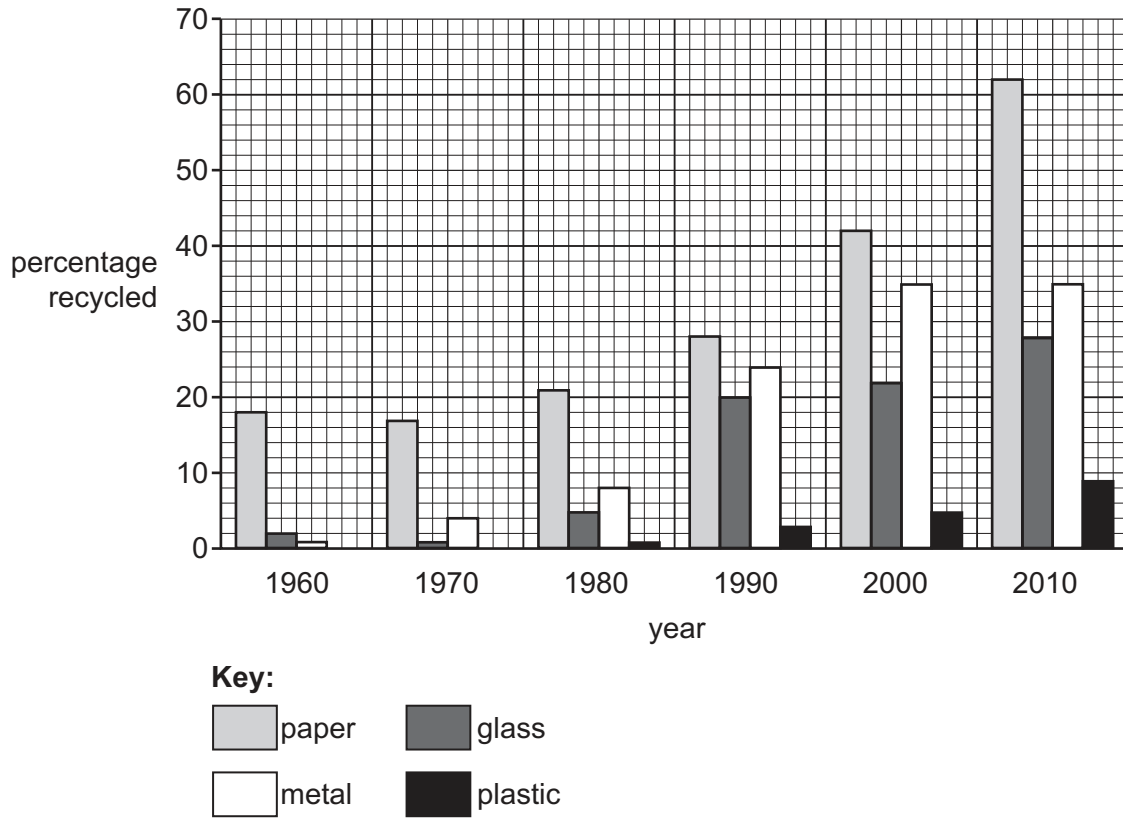


Fig. 5.1

(a) Complete the sentences using the data shown in Fig. 5.1.

The general trend shows that between 1970 and 2000 the percentage of materials recycled has The most commonly recycled material is

.....

In 1970 was **not** recycled.

The percentage of recycled did not change between 2000 and 2010.

[4]

(b) Calculate the increase in the percentage of glass recycled between 1960 and 1990.

..... % [1]

[Total: 5]

- 6 (a) Pectinase is an enzyme that is used in the production of apple juice.

A student investigated how pH affected the volume of apple juice produced when using pectinase.

The student chopped an apple into small pieces.

The pieces of apple were put into solutions with different pH values.

Pectinase was added to each solution.

After two hours the mixture was filtered and the volume of apple juice obtained was recorded.

Table 6.1 shows the results.

Table 6.1

pH	volume of apple juice obtained / cm ³
1.0	23.2
2.0	24.2
3.0	23.5
4.0	25.7
5.0	27.6
6.0	27.4
7.0	24.0
8.0	22.0

- (i) State the pH at which pectinase is most active.

Give a reason for your answer.

pH

reason

.....

.....

[2]

- (ii) State **one** factor, other than pH, that would affect the activity of pectinase.

..... [1]

(b) Pectinase is an enzyme.

The box on the left shows the beginning of a sentence.

The boxes on the right show some endings of sentences.

Draw **three** lines from the word 'Enzymes' to make three correct sentences.

Enzymes	are living organisms.
	are proteins.
	can only be used once.
	have a complementary shape to their substrate.
	increase the rate of chemical reactions.
	in the stomach are most active at pH8.

[3]

(c) State **one** use of enzymes in biotechnology other than fruit juice production.

..... [1]

(d) Many types of enzymes are involved in digestion.

State the names of **two** digestive enzymes in the human alimentary canal.

1

2

[2]

[Total: 9]

7 (a) Pollination occurs when pollen is transferred from one flower to another.

Fig. 7.1 is a diagram of part of a flower.

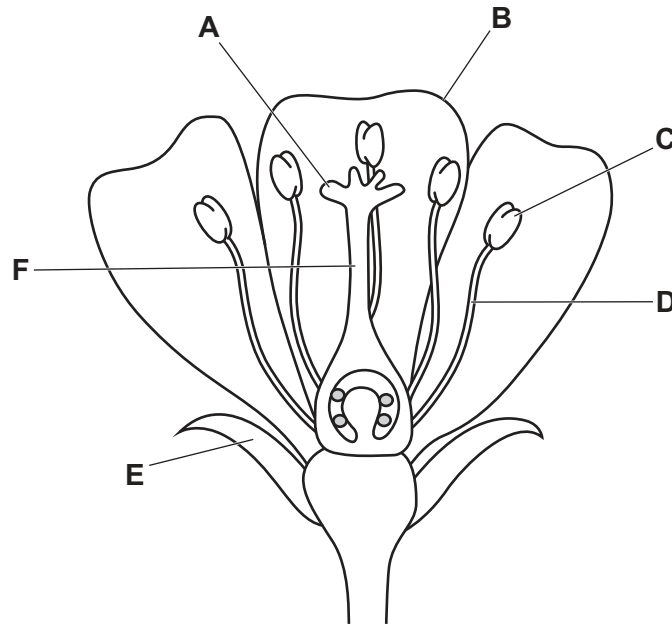


Fig. 7.1

(i) State the letter from Fig. 7.1 that identifies the structure which:

attracts insect pollinators

produces pollen

receives the pollen during pollination

[3]

(ii) Draw a label line and the letter **X** on the flower in Fig. 7.1 to show where fertilisation occurs. [1]

(iii) State the name of the part labelled **E** in Fig. 7.1.

..... [1]

(b) The flower shown in Fig. 7.1 represents an insect-pollinated flower.

Describe **two** ways the pollen from an insect-pollinated flower differs from the pollen from a wind-pollinated flower.

1

.....

2

.....

[2]

- (c) A student wrote an **incorrect** statement about fertilisation in plants.

Fertilisation is the fusion of zygote nuclei.

Circle the incorrect word.

[1]

- (d) Plants can reproduce asexually or sexually.

Table 7.1 compares asexual and sexual reproduction.

Place ticks (✓) in the boxes to show the correct features of asexual and sexual reproduction.

Table 7.1

features of reproduction	asexual reproduction	sexual reproduction
involves gametes		
makes more of the same kind of organism		
produces genetically identical offspring		
involves fertilisation		

[4]

[Total: 12]

8 (a) Fig. 8.1 is a Punnett square used to show the inheritance of sex in humans.

Complete the Punnett square in Fig. 8.1.

		male parent chromosomes	
		X	Y
female parent chromosomes	X

Fig. 8.1

[2]

(b) Circle the percentage chance of a baby being male.

0 25 50 75 100

[1]

(c) State the name of the structure, in a gamete, that contains chromosomes.

..... [1]

(d) Sea turtles are reptiles which lay eggs.

The sex of the sea turtle offspring is affected by the temperature at which the eggs are kept.

Scientists investigated the effect of temperature on the sex of sea turtle offspring.

Fig. 8.2 shows the results.

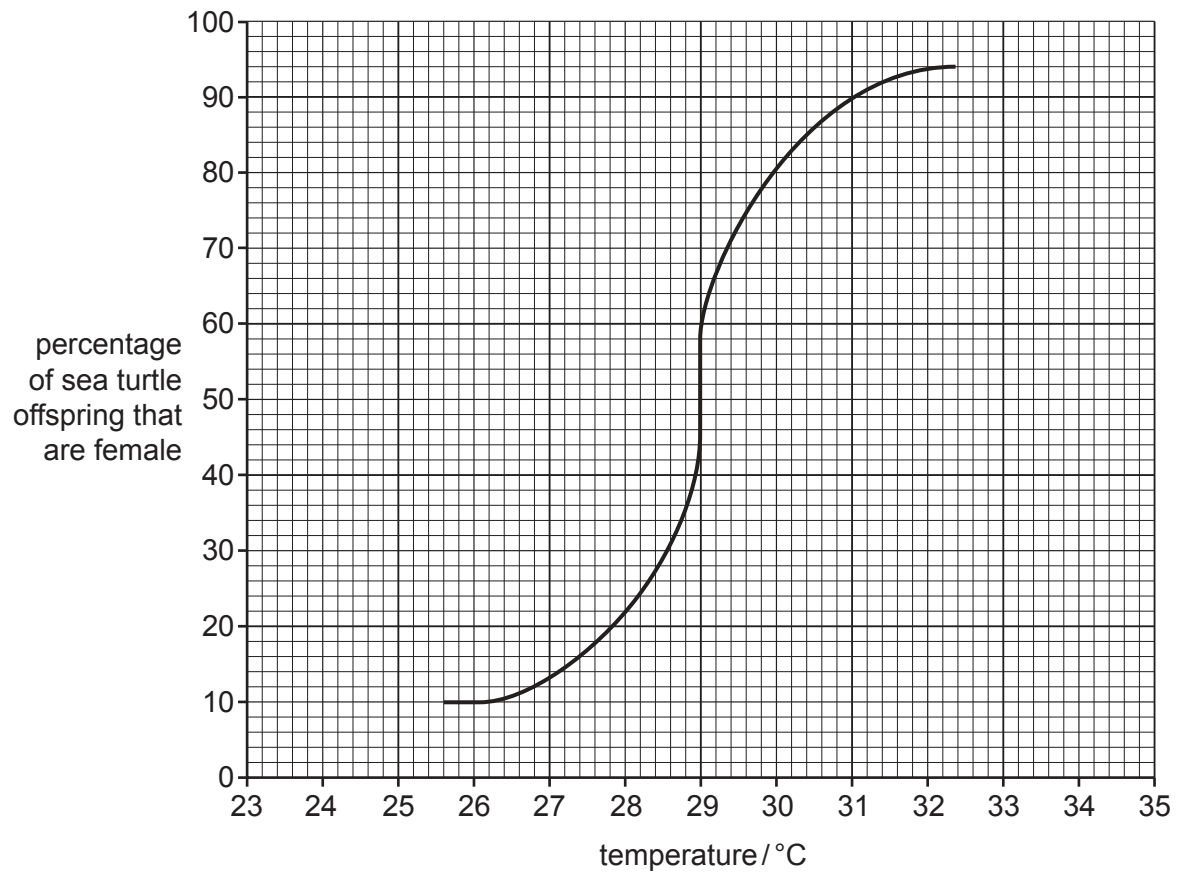


Fig. 8.2

(i) State the temperature at which 22% of the sea turtle offspring are female.

..... °C [1]

(ii) Describe the data shown in Fig. 8.2.

.....

.....

.....

.....

.....

.....

.....

..... [3]

[Total: 8]

- 9 Fig. 9.1 is a photograph of a fish farm. Fish are kept in small cages in the sea and are fed. This is an example of intensive livestock production.



Fig. 9.1

- (a) Describe the negative impacts of intensive livestock production.

.....

.....

.....

.....

.....

.....

.....

.....

..... [3]

- (b) Define the term sustainable resource.

.....

.....

..... [2]

(c) Circle **two** examples of sustainable resources from the list.

coal

fish stocks

natural gas

crude oil

forests

[1]

[Total: 6]

BLANK PAGE

Permission to reproduce items where third-party owned material protected by copyright is included has been sought and cleared where possible. Every reasonable effort has been made by the publisher (UCLES) to trace copyright holders, but if any items requiring clearance have unwittingly been included, the publisher will be pleased to make amends at the earliest possible opportunity.

To avoid the issue of disclosure of answer-related information to candidates, all copyright acknowledgements are reproduced online in the Cambridge Assessment International Education Copyright Acknowledgements Booklet. This is produced for each series of examinations and is freely available to download at www.cambridgeinternational.org after the live examination series.

Cambridge Assessment International Education is part of the Cambridge Assessment Group. Cambridge Assessment is the brand name of the University of Cambridge Local Examinations Syndicate (UCLES), which itself is a department of the University of Cambridge.